

# Connecting to the Wireless Network for Internet Access

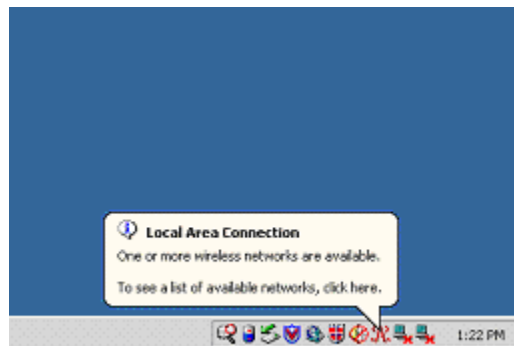
## Manual Wireless Settings

<b>Network Name (SSID)</b>	<b>CCCLIBRARY</b>
<b>Wireless Mode (network type)</b>	<b>Infrastructure</b>
<b>IP settings</b>	<b>Use DHCP</b>
<b>WEP</b>	<b>Disabled</b>

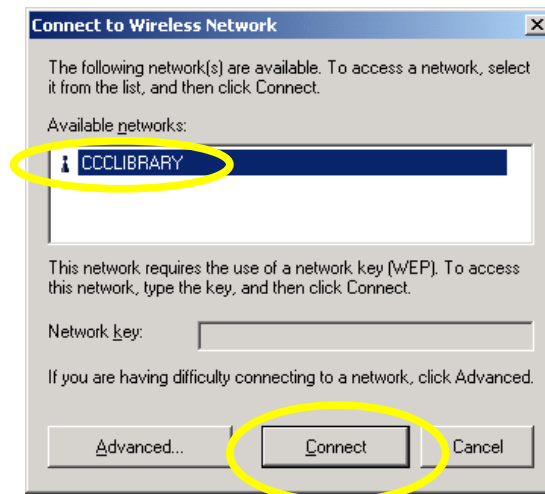
(DHCP must be enabled. On most computers this option is enabled by default). If you cannot connect, refer to the troubleshooting section below.) Because software can vary greatly between different machines, not all steps or screens may be the same.

## Windows 2000, XP:

1. Turn on your computer, if your computer can see the wireless network, your computer will probably alert you in the lower right hand of your screen:



2. Click on the indicated icon on your taskbar to launch your wireless manager software (note that your software may look differently than the example). Highlight the wireless network name "CCCLIBRARY" and click the "connect" button.



3. Open Internet Explorer.
4. You will be prompted to read and accept the disclaimer, by clicking “accept”. Note that you must accept in order to use the WiFi system.
5. You are now free to browse; a small window like this will open during your session, when you are ready to stop using the Internet, click logout to disconnect.



#### **MAC OS:**

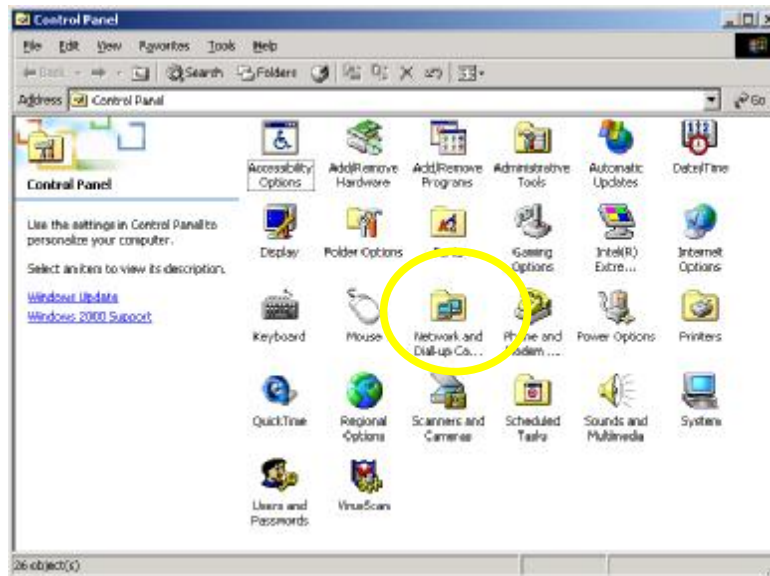
1. Click on System Preferences from the Apple Menu
2. Double-click the Network logo
3. Under Show Menu select AirPort
4. Close window
5. Open Internet Connect and turn on AirPort
6. From Network Menu select CCCLIBRARY (SSID)
7. Open a web browser – Safari Browser may not support our logon page, If you cannot logon, you must use Internet Explorer.
8. You will be prompted to read and accept the disclaimer, and log on. The user name is “public” (lower case) and the password is “public”.
9. Once you are logged in, you are free to browse with any software you like.

## Advanced Troubleshooting:

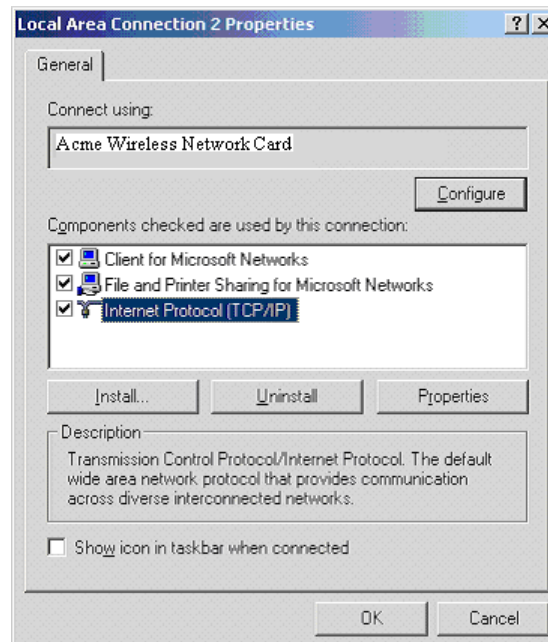
Your device must be set to accept an IP address automatically (DHCP enabled). You will not be able to connect to the wireless-enabled device, unless it is setup to handle DHCP. Here are instructions on how you can check on that setting & how you can modify it to work with the hotspot:

**Windows 2000 & XP** (You may need administrative access to your laptop to change these settings)

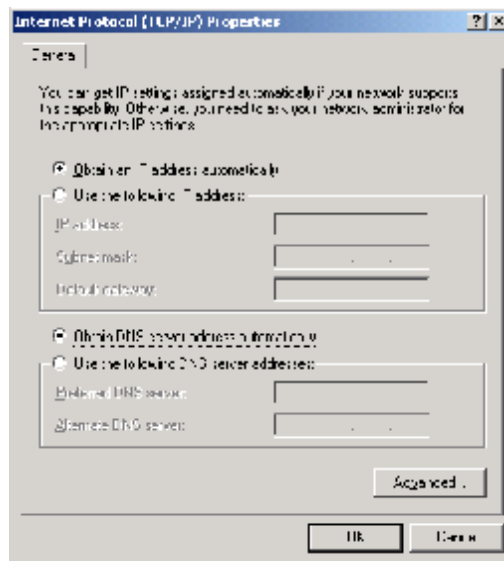
1. From Control Panel, select Network and Dial-up connections



2. You should see a list of network adapters. Select the appropriate wireless adapter, Right click on the icon and choose Properties
3. Highlight TCP/IP protocol Click on properties



4. Select (or make sure it is already selected) Obtain an IP address automatically and Obtain DNS server address automatically. Click ok. The system may prompt you to reboot. Reboot the machine.

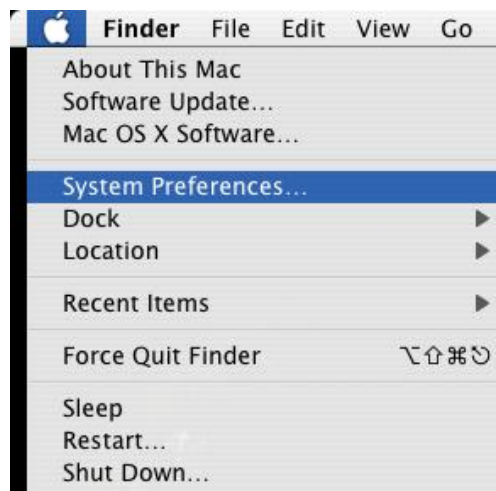


If you still cannot use the system, here are some other Internet Explorer Tips (Depending on your version of software, there may be variations in these procedures.)

1. From Control Panel, select Internet Options > Connections tab
2. For those with a dial-up connection, do not set it to Always dial my default connection
3. LAN Settings should be Automatically detect settings and leave the proxy server settings blank

#### Mac OS X:

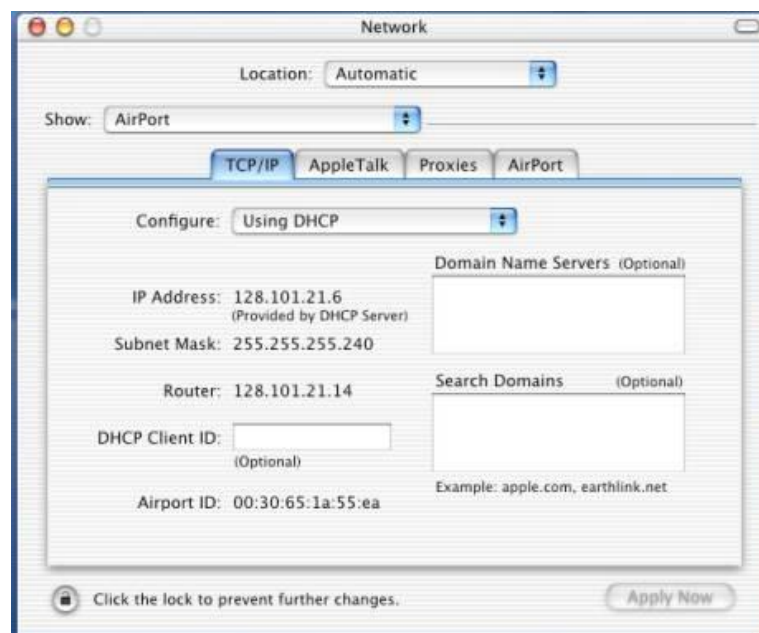
1. Click on System Preferences from the Apple Menu



2. Double-click the Network Icon



3. Under Show Menu select AirPort / Select "USING DHCP" in the configure pull down menu



4. Click Apply NOW.
5. Reboot as necessary.