

Windows 7

Connecting to the Wireless Network for Internet Access

Wireless Settings

Network Name (SSID)	CCCLIBRARY
Wireless Mode (network type)	Infrastructure
IP settings	Use DHCP
WEP	Disabled

(DHCP must be enabled. On most computers this option is enabled by default). If you cannot connect, refer to the troubleshooting section below.) Because software can vary greatly between different machines, not all steps or screens may be the same.

Step 1- Turn on your computer and be sure the wireless connection is enabled.

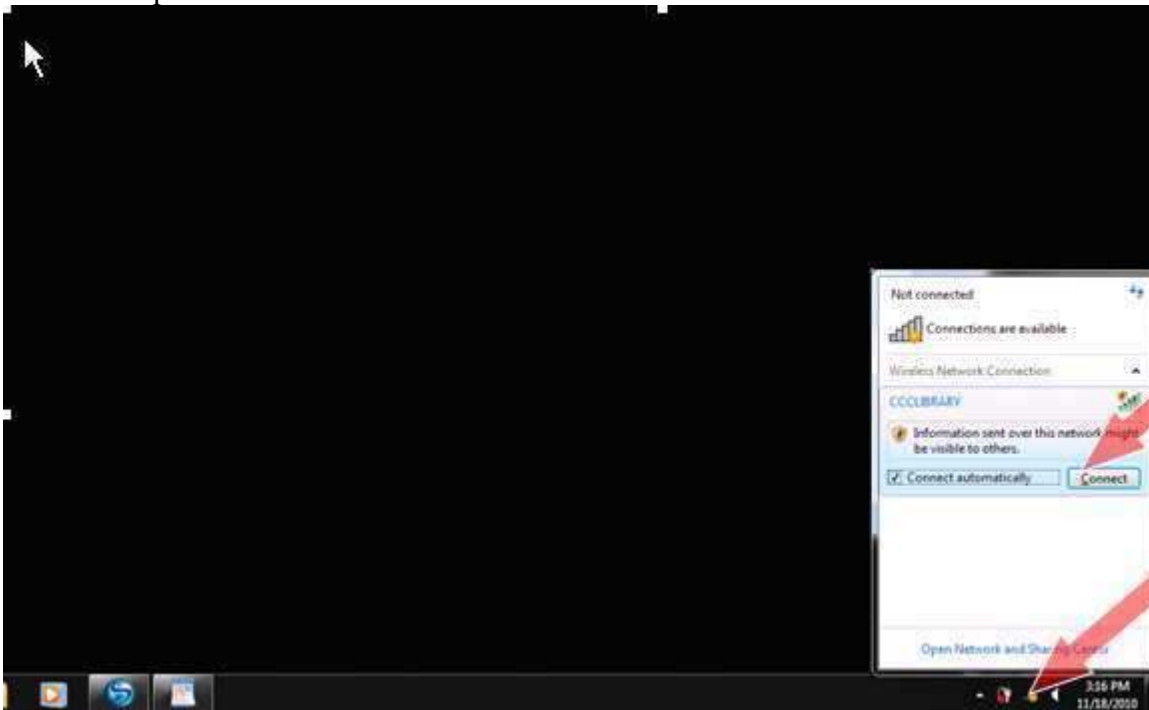
Then, point to the wireless connection on the system tray,

Select CCCLIBRARY Wifi system,

Check the box automatically

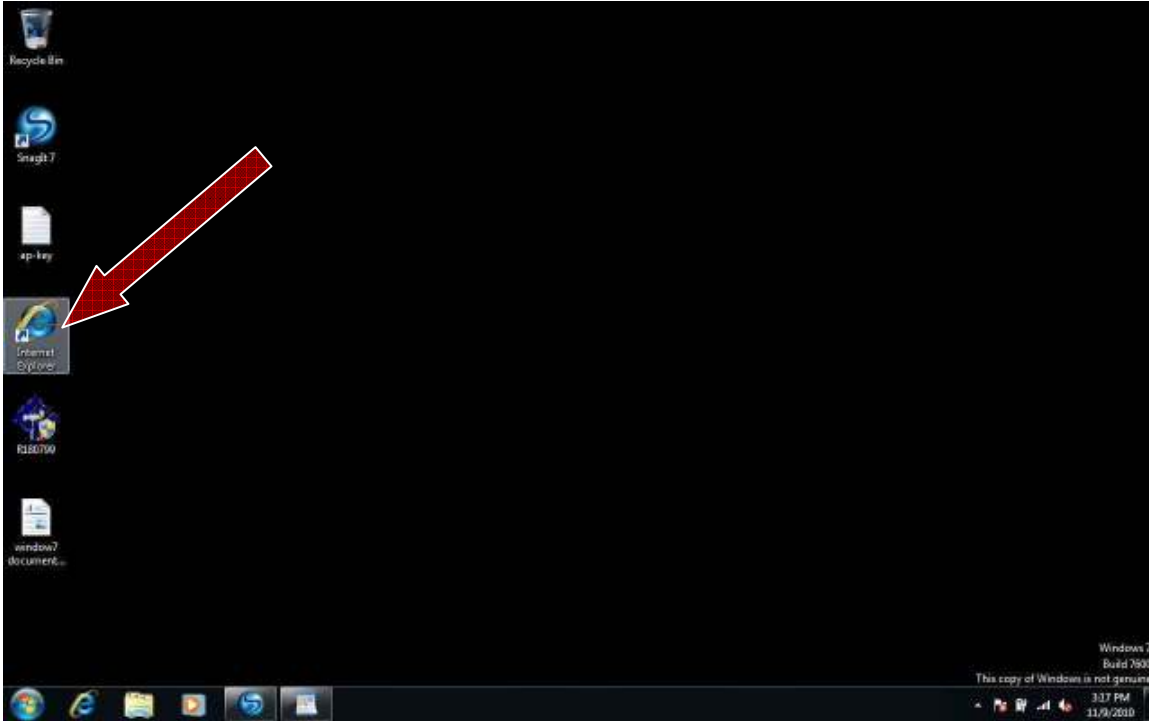
Click on Connect

See the picture 1 below



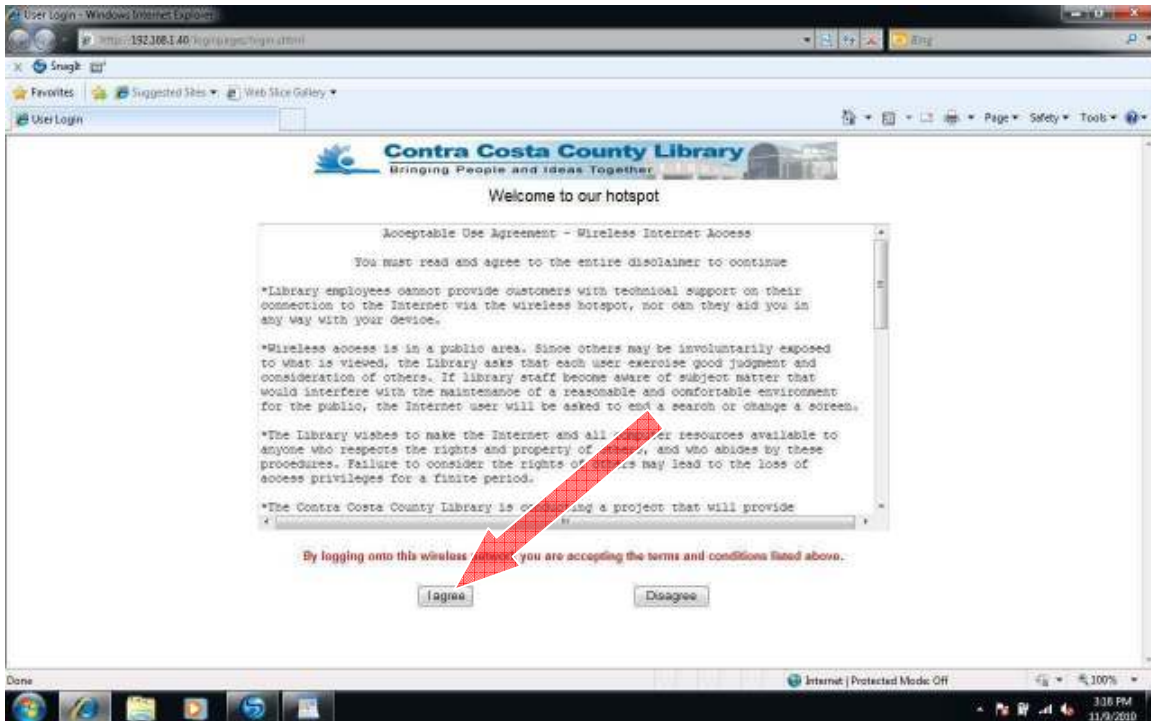
Picture 1

Step 2 - Click on IE – Internet Explorer on your desktop to open browser. See picture 2 below



Picture 2

Step 3 - You will be prompted to read and accept the disclaimer, by clicking “I agree”. Note that you must accept in order to use the CCCLIBRARY WiFi system. See picture 3 below.



Picture 3

Step 4 - After click on “I agree”, your browser will be redirect to <http://www.ccclib.org> website. Now you are free to browse. See picture 4 below.



Picture 4

Step 5 - Done.

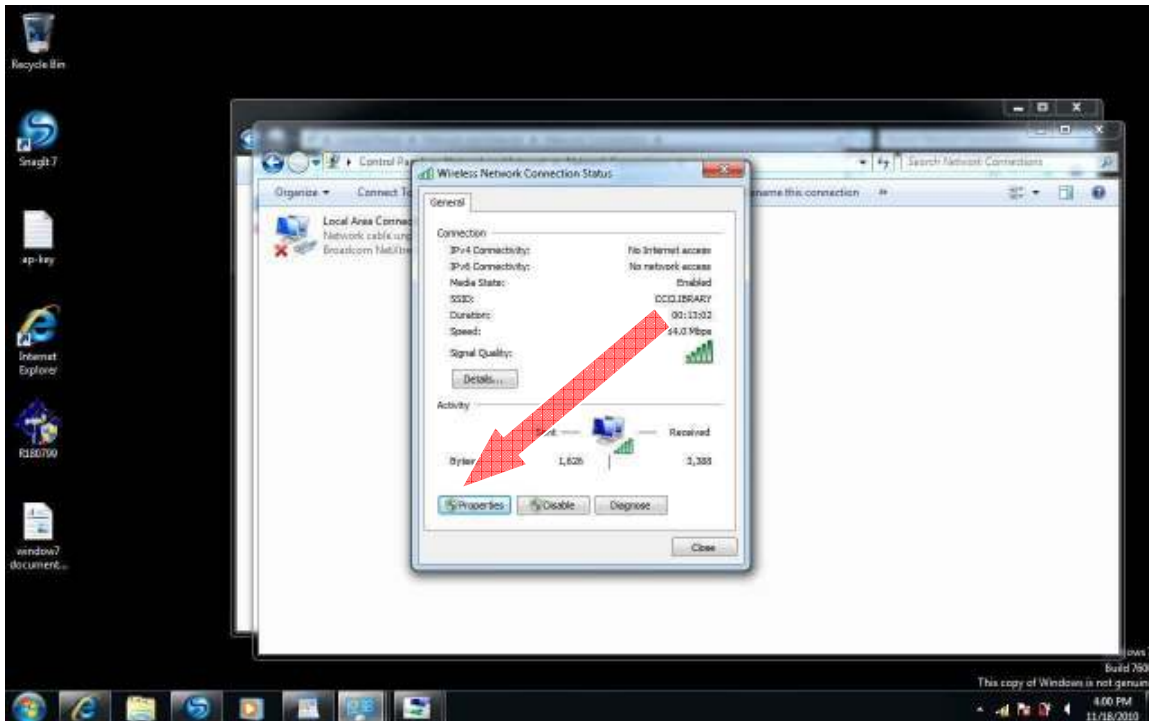
Advanced Troubleshooting for Windows

7

Your device must be set to accept an IP address automatically (DHCP enabled). You will not be able to connect to the CCCLIBRARY Wifi System, unless it is setup to handle DHCP (On most computers this option is enabled by default.) The following instruction is to show you how to enable DHCP on you computer.

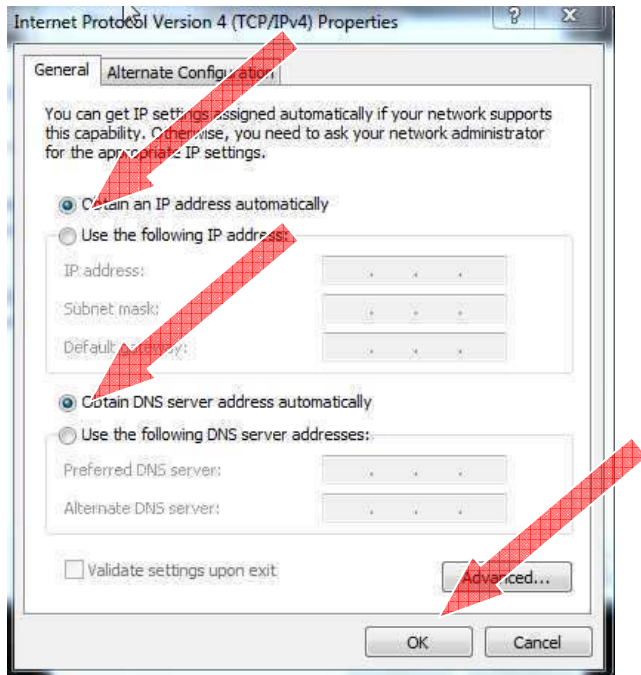
How to enable DHCP on Windows 7:

1- Start -> Control panel -> Network and sharing Center -> Change Adapter Setting -> Double click on Wireless network connection --> click on properties. See picture 1.1 below



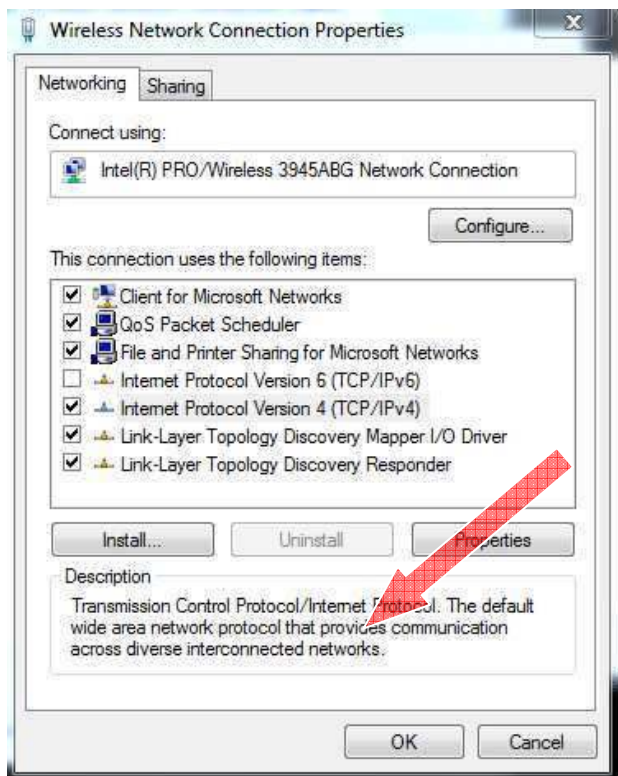
Picture 1.1

2- Double click on Internet Protocol Version 4 (TCP/IPv4). Select Obtain Ip address automatically and Obtain DNS server address automatically. Click OK. See picture 1.2 below.



Picture 1.2

3- Then Click OK. See picture 1.3



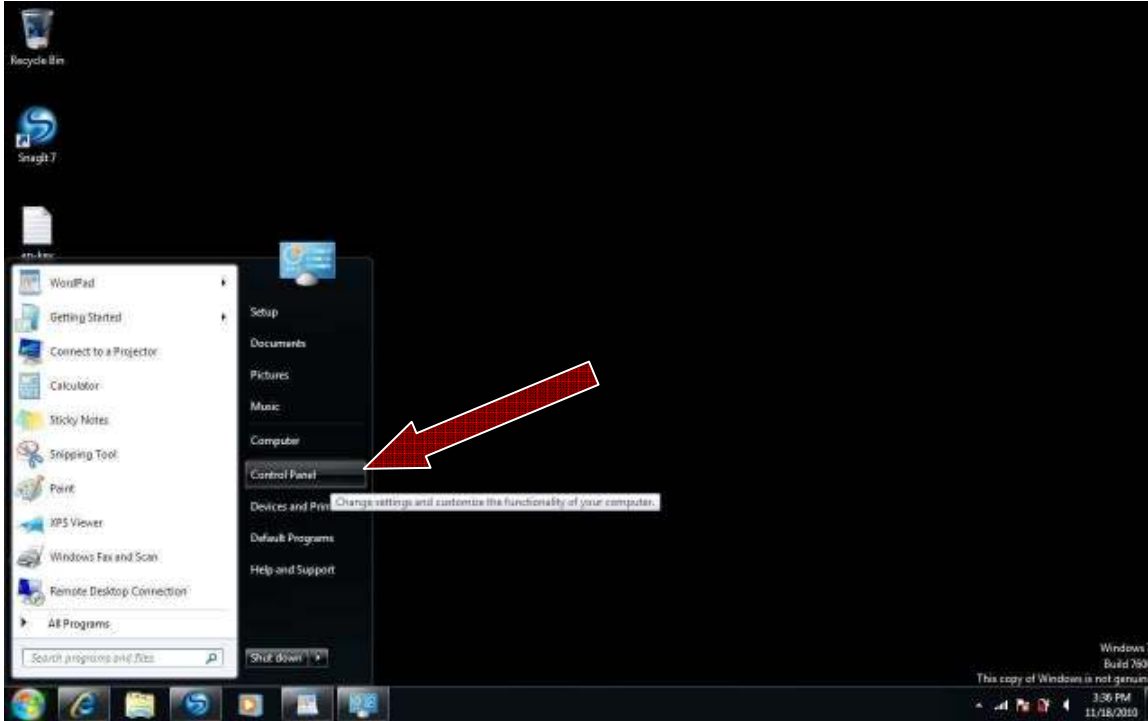
Picture 1.3

4- Done. Go back to step 1 try again.

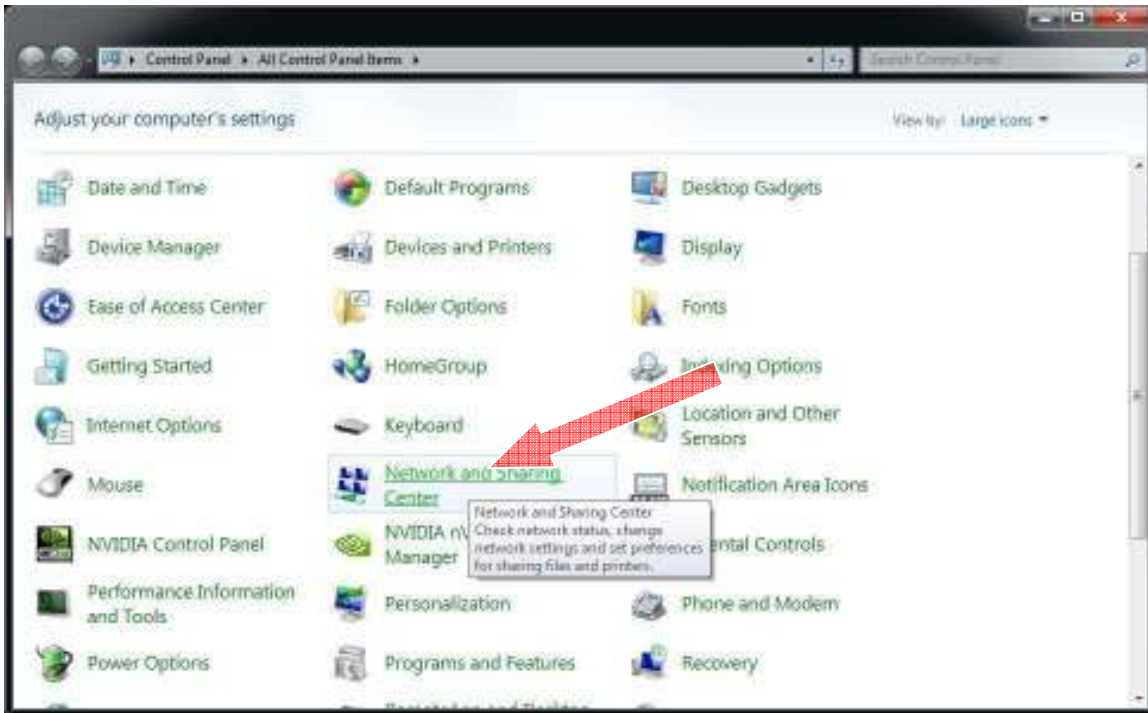
If for some reason, you are not able to see the wireless icon on your system tray.

Do the following.

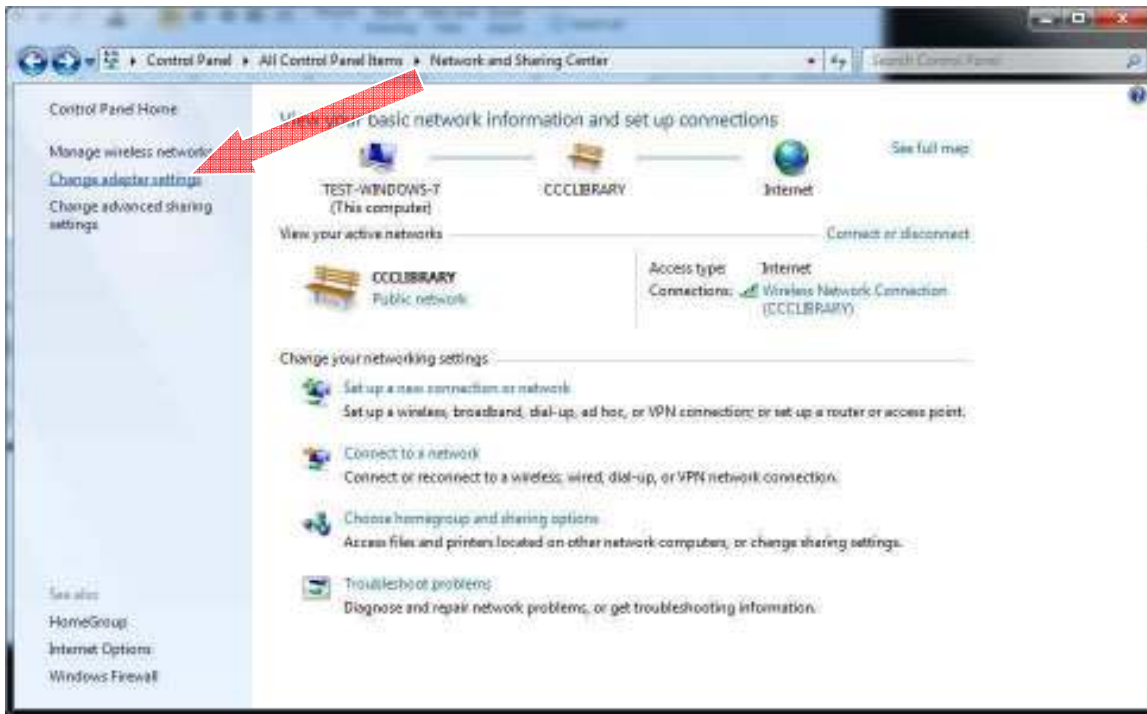
Start --> Control Panel -> Network and Sharing Center -->Change Adapter Setting --> Right click on Wireless adapter, see pictures bellow.



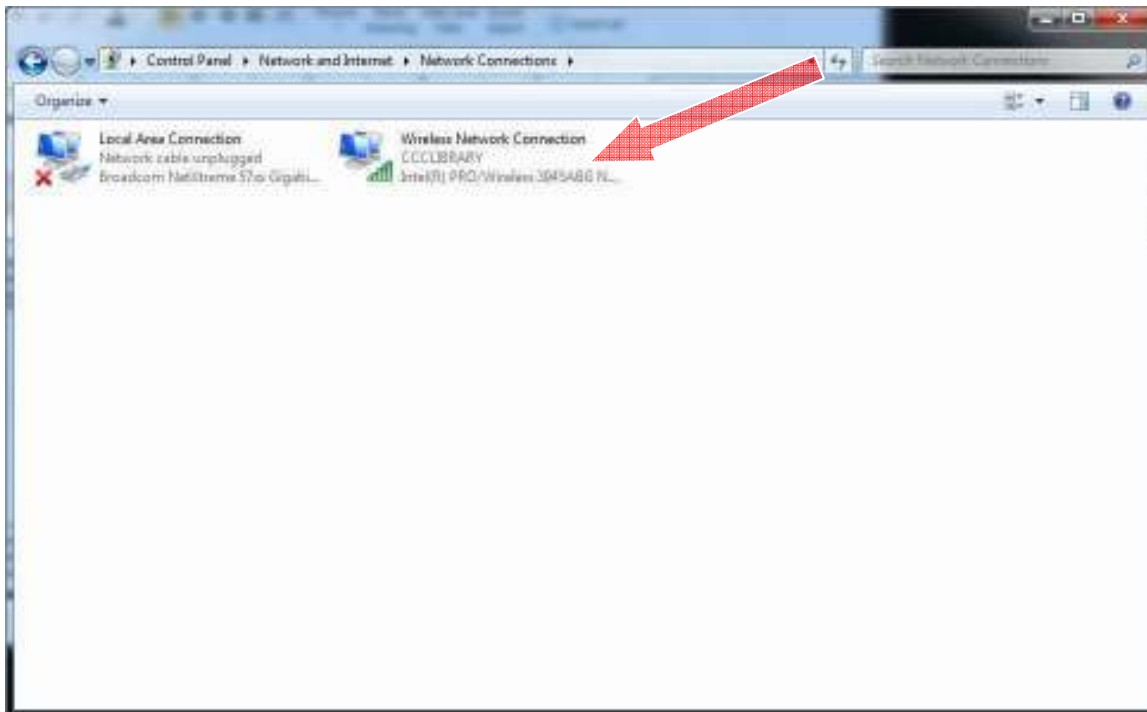
Click on Control Panel



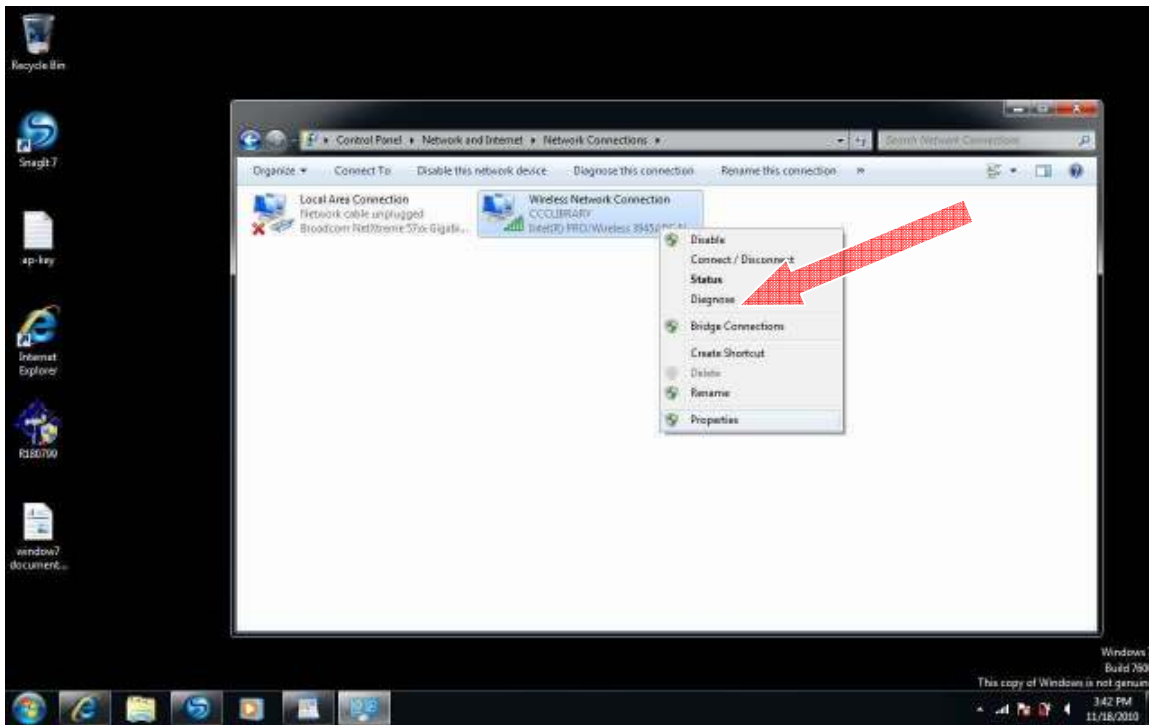
Click on Network and Sharing Center



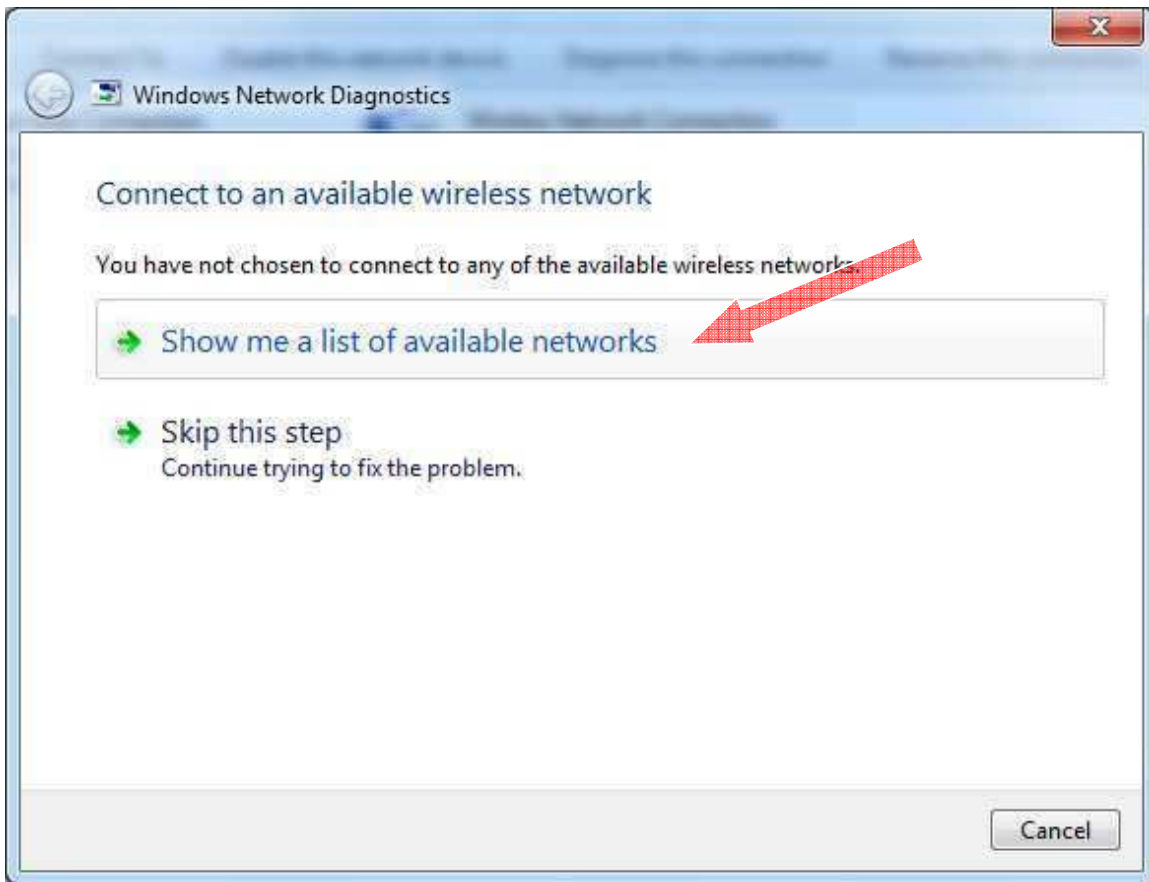
Click on Change adapter settings



Right click on Wireless Network Connection --> click on Diagnostics



Click on Diagnostics



After a min or so, it will prompt you with the Windows Network Diagnostics Windows as picture on left. Click on Show me a list of available networks.

It will show you a list of wireless network connections are available.

Now select CCCLIBRARY Wireless connection -> connect --> go back to step 2

Windows Vista

DHCP must be enabled. On most computers this option is enabled by default

Step 1 - Turn on your computer, if your computer can see the wireless network, your computer will probably alert you in the lower right hand of your screen. Click on “Wireless networks are available”: See Figure 1. (If you don't see wireless network connection on the system tray, then go to **Step 1a**. See Figure 1a)



Figure 1

Step 1a - Click on Start → Connect To. It will bring you to “Connect to a network”. See Figure 2 below.

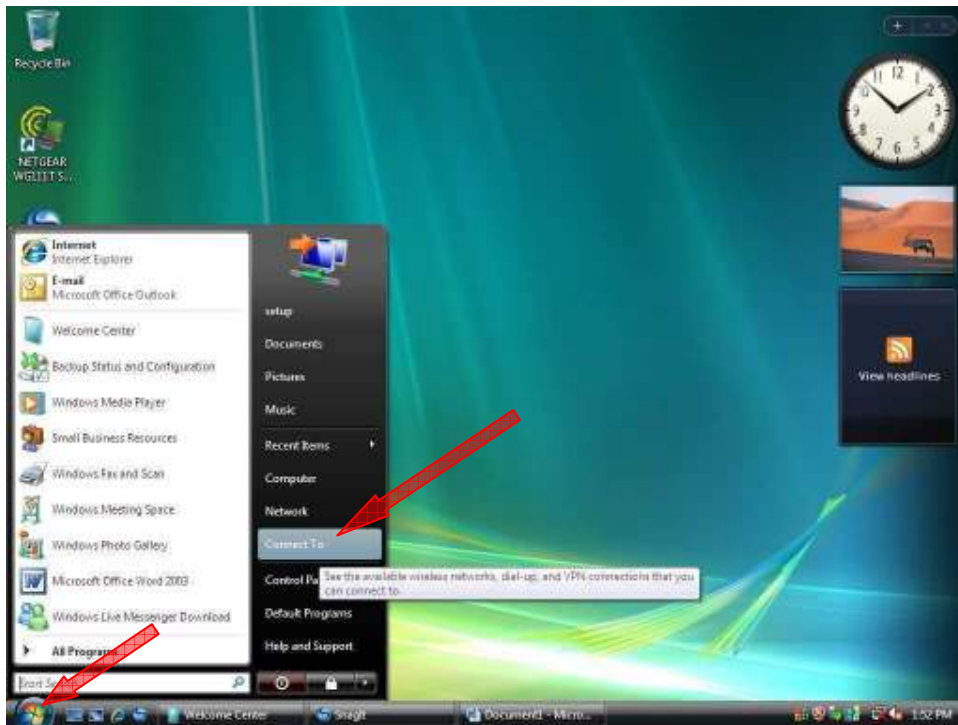


Figure 1a

Step 2 - It will bring you to Figure 2 as below. Now highlight the “CCCLIBRARY”, and then click on “Connect”

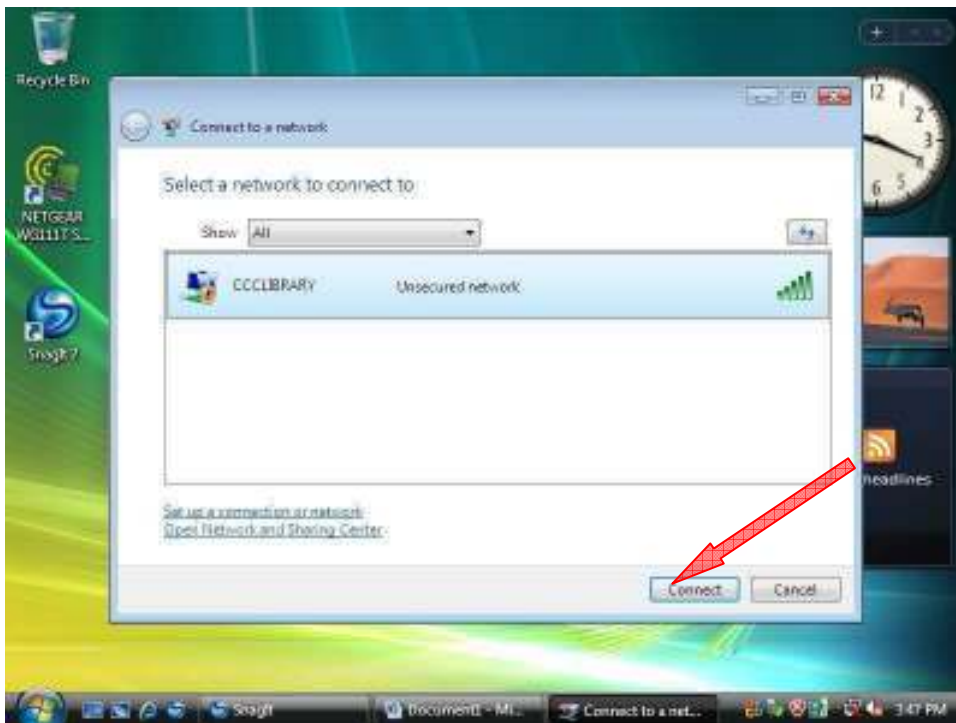
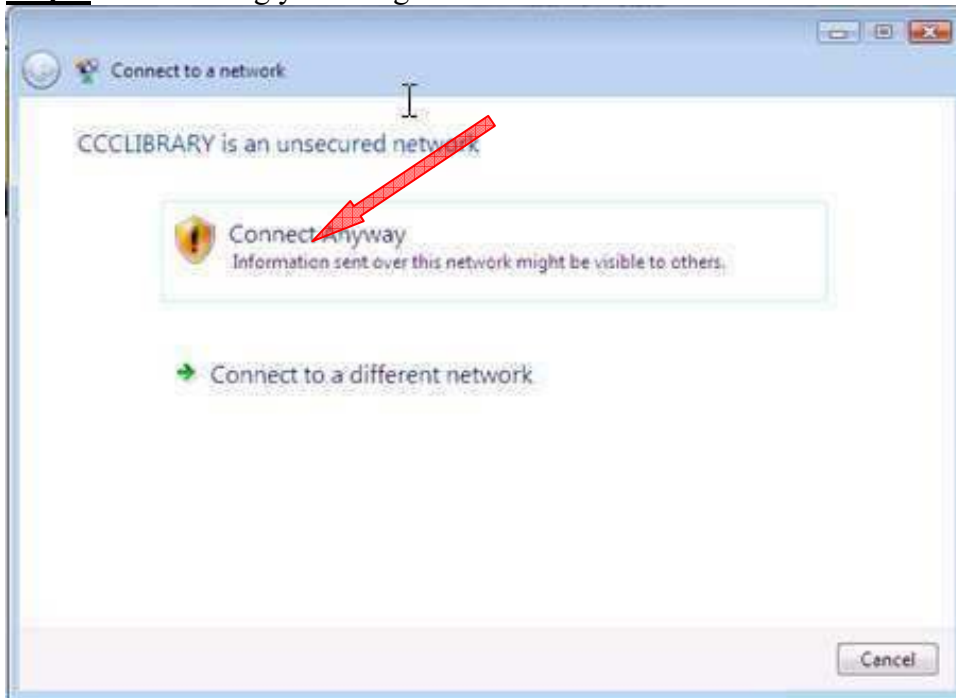


Figure 2

Step 3 - It will bring you to Figure 3 as below. Now click on “Connect Anyway”



Step 4 - It will bring you to Figure 4 as below, which shows “Connecting to CCCLIBRARY”

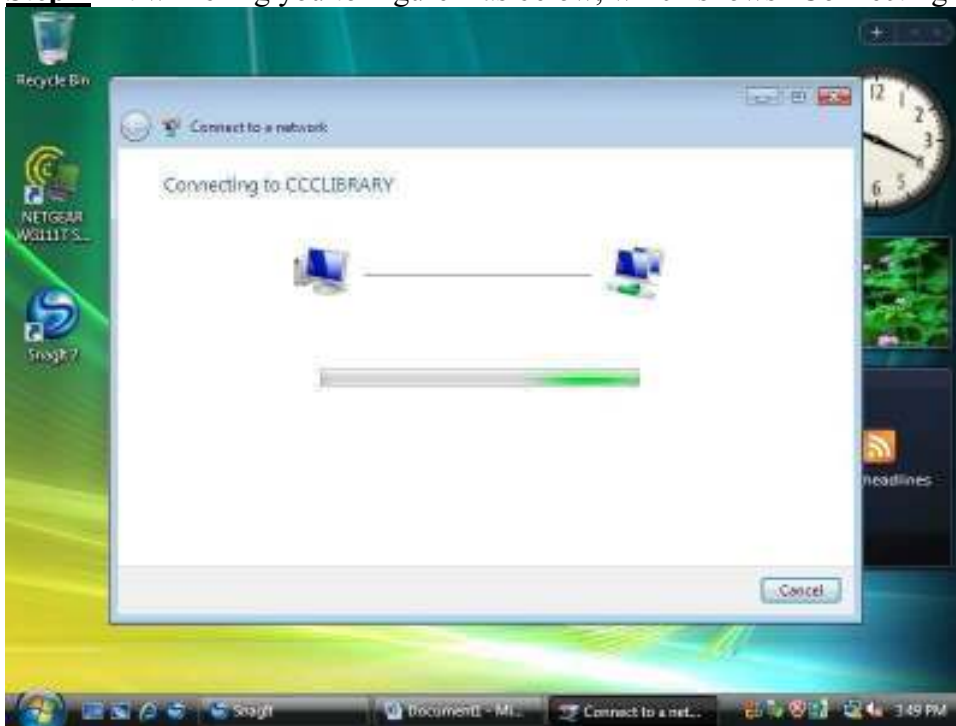


Figure 4

Step 5 - After a few seconds or a minute, it will bring you to Figure 5 as below. You might want to check the box “Save this network” in order for it to remember this network. Now, click the “Close” button.



Figure 5

To verify that you are currently connecting to “CCCLIBRARY”, see Figure 6




Figure 6

Step 6 - Now open the Internet Explorer  short cut, as Figure 7 below



Figure 7

Step 7 - After, click on IE . You will be re-directed to “User Login Page”. Click on “I Agree” as Figure 8 below.

Note: You will be prompted to read and accept the disclaimer, by clicking “I agree”. Note that you must accept in order to use the WiFi system

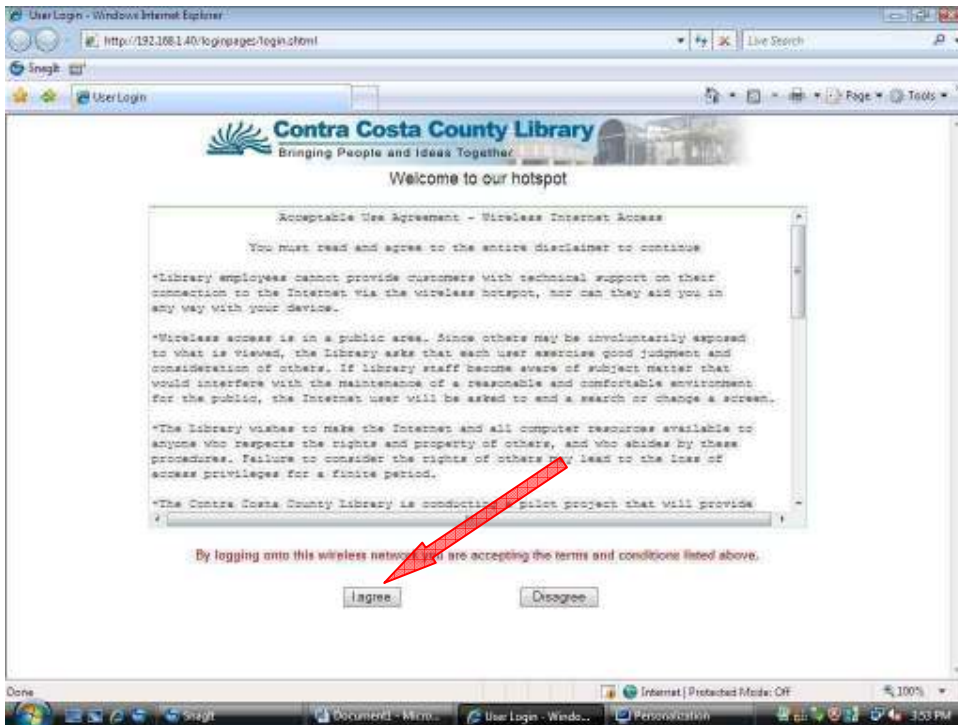


Figure 8

It will bring you to <http://ccclib.org> website. Now you are on “CCCLIBRARY” wireless system.

Connecting to the Wireless Network for Internet Access

Manual Wireless Settings

Network Name (SSID)	CCCLIBRARY
Wireless Mode (network type)	Infrastructure
IP settings	Use DHCP
WEP	Disabled

(DHCP must be enabled. On most computers this option is enabled by default). If you cannot connect, refer to the troubleshooting section below.) Because software can vary greatly between different machines, not all steps or screens may be the same.

Windows 2000, XP:

1. Turn on your computer, if your computer can see the wireless network, your computer will probably alert you in the lower right hand of your screen:



2. Click on the indicated icon on your taskbar to launch your wireless manager software (note that your software may look differently than the example). Highlight the wireless network name "CCCLIBRARY" and click the "connect" button.



3. Open Internet Explorer.
4. You will be prompted to read and accept the disclaimer, by clicking “accept”. Note that you must accept in order to use the WiFi system.
5. You are now free to browse; a small window like this will open during your session, when you are ready to stop using the Internet, click logout to disconnect.



MAC OS:

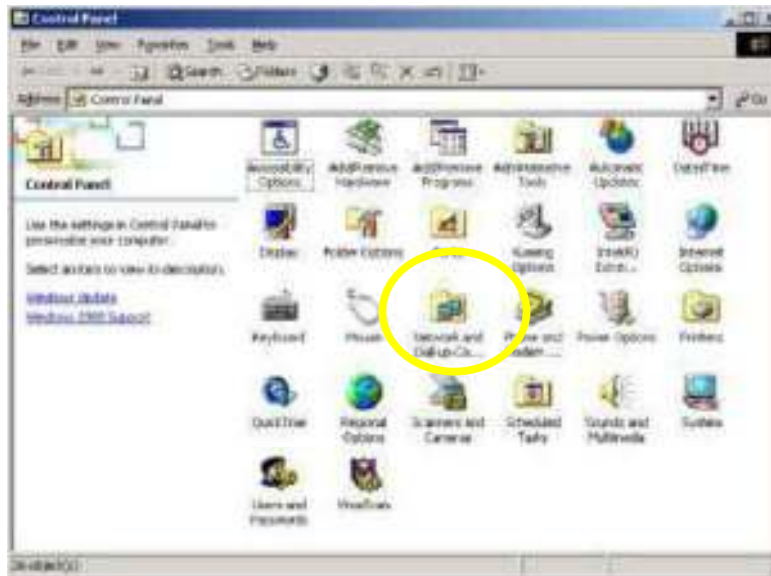
1. Click on System Preferences from the Apple Menu
2. Double-click the Network logo
3. Under Show Menu select AirPort
4. Close window
5. Open Internet Connect and turn on AirPort
6. From Network Menu select CCCLIBRARY (SSID)
7. Open a web browser – Safari Browser may not support our logon page, If you cannot logon, you must use Internet Explorer.
8. You will be prompted to read and accept the disclaimer, and log on. The user name is “public” (lower case) and the password is “public”.
9. Once you are logged in, you are free to browse with any software you like.

Advanced Troubleshooting:

Your device must be set to accept an IP address automatically (DHCP enabled). You will not be able to connect to the wireless-enabled device, unless it is setup to handle DHCP. Here are instructions on how you can check on that setting & how you can modify it to work with the hotspot:

Windows 2000 & XP (You may need administrative access to your laptop to change these settings)

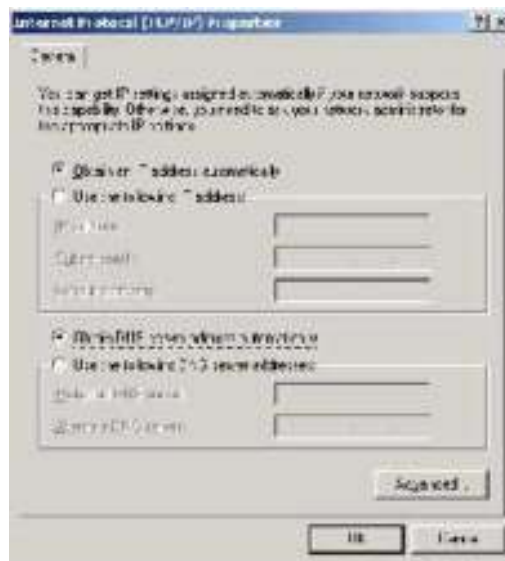
1. From Control Panel, select Network and Dial-up connections



2. You should see a list of network adapters. Select the appropriate wireless adapter, Right click on the icon and choose Properties
3. Highlight TCP/IP protocol Click on properties



4. Select (or make sure it is already selected) Obtain an IP address automatically and Obtain DNS server address automatically. Click ok. The system may prompt you to reboot. Reboot the machine.

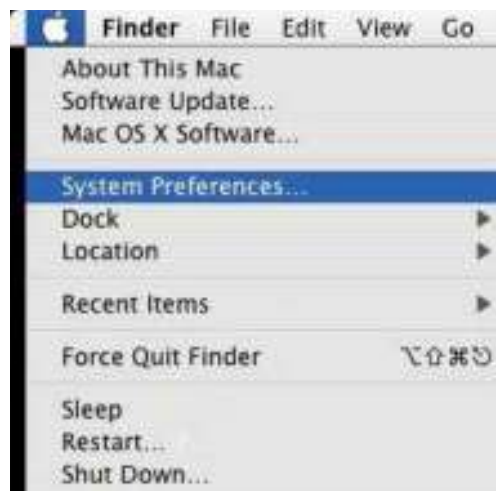


If you still cannot use the system, here are some other Internet Explorer Tips
(Depending on your version of software, there may be variations in these procedures.)

1. From Control Panel, select Internet Options > Connections tab
2. For those with a dial-up connection, do not set it to Always dial my default connection
3. LAN Settings should be Automatically detect settings and leave the proxy server settings blank

Mac OS X:

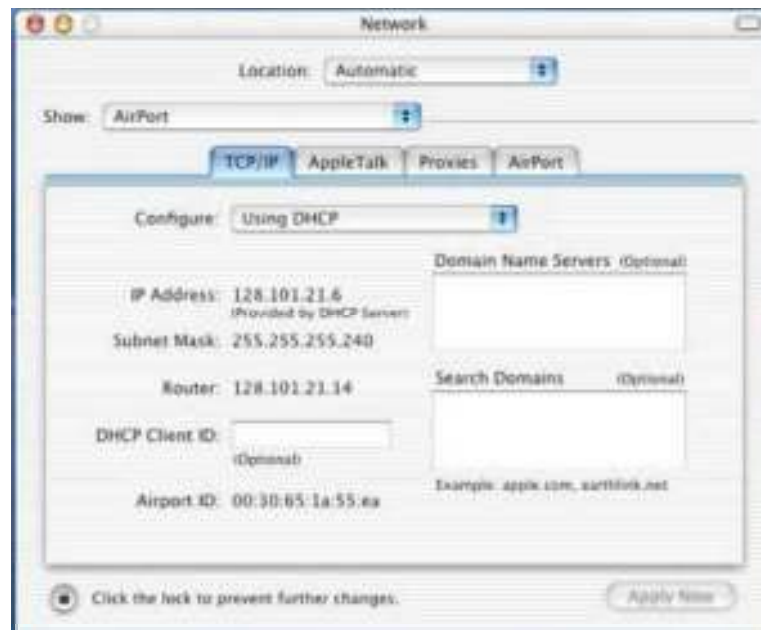
1. Click on System Preferences from the Apple Menu



2. Double-click the Network Icon



3. Under Show Menu select AirPort / Select "USING DHCP" in the configure pull down menu



4. Click Apply NOW.
5. Reboot as necessary.

MAC OS X 10.6

Connecting to the Wireless Network for Internet Access

Wireless Settings

Network Name (SSID)	CCCLIBRARY
Wireless Mode (network type)	Infrastructure
IP settings	Use DHCP
WEP	Disabled

(DHCP must be enabled. On most computers this option is enabled by default). If you cannot connect, refer to the troubleshooting section below.) Because software can vary greatly between different machines, not all steps or screens may be the same.

- 1- Be sure the Airport function is turned on, then select CCCLIBRARY Wifi system See the picture 1 below



Picture 1

- 2- Then, click on Safari browser on the Dock to open the browser. See picture 2 below

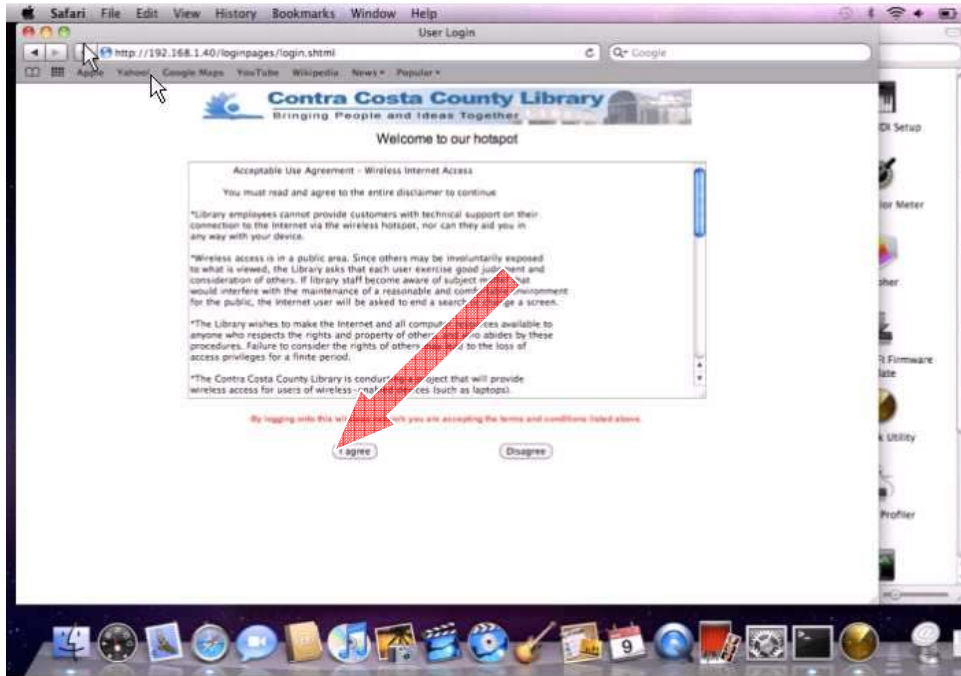


Picture 2

Note: If your Safari browser displays a message “The page can not be found”, Please see advance trouble shooting below

3- You will be prompted to read and accept the disclaimer, by clicking “I agree”.

Note that you must accept in order to use the CCCLIBRARY WiFi system. See picture 3 below.



Picture 3

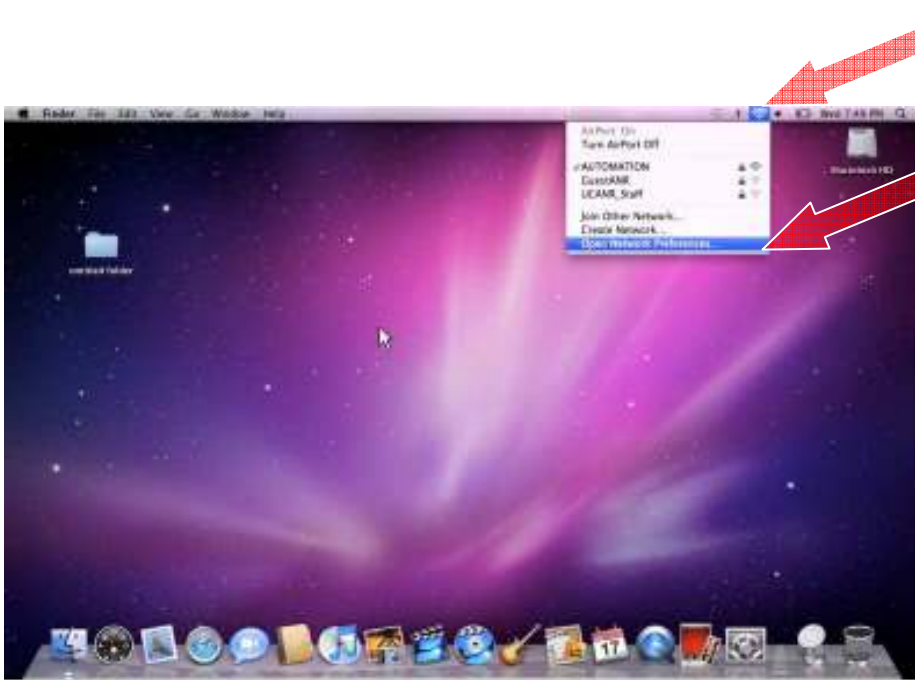
4- After click on “I agree”, your browser will be redirect to <http://www.ccclib.org> website. Now you are free to browse. See picture 4 below.



Picture 4

Advanced Troubleshooting for Mac OS

Your device must be set to accept an IP address automatically (DHCP enabled). You will not be able to connect to the CCCLIBRARY Wifi System, unless it is setup to handle DHCP (On most computers this option is enabled by default.) The following instruction is to show you how to enable DHCP on you computer.



1- Click the Airport Icon.
2- Click Open Network Preference
(See picture 2.1 on the left)

Picture2.1



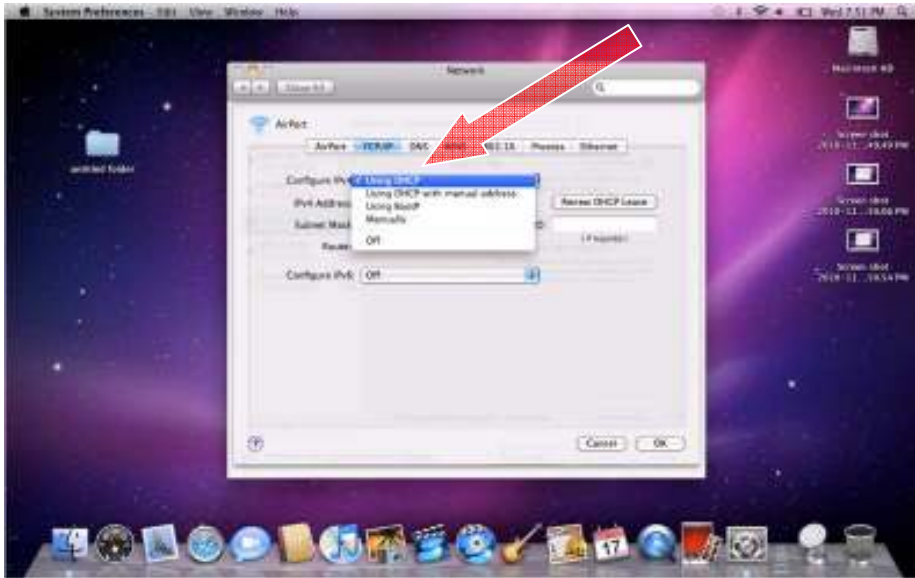
3- Click on Advance button (See Picture 2.2 on the left)

Picture 2.2



4- Select the TCP/IP Tab (See Picture 2.3 on the left)

Picture 2.3



5- Point to Configure IPV4 and select Using DHCP
6- Click Ok. (See Picture 2.4 on the left)

Picture 2.4



7- Finally, Click on Apply Button – Done. (See Picture 2.5 on the left)

Picture 2.5

Note:

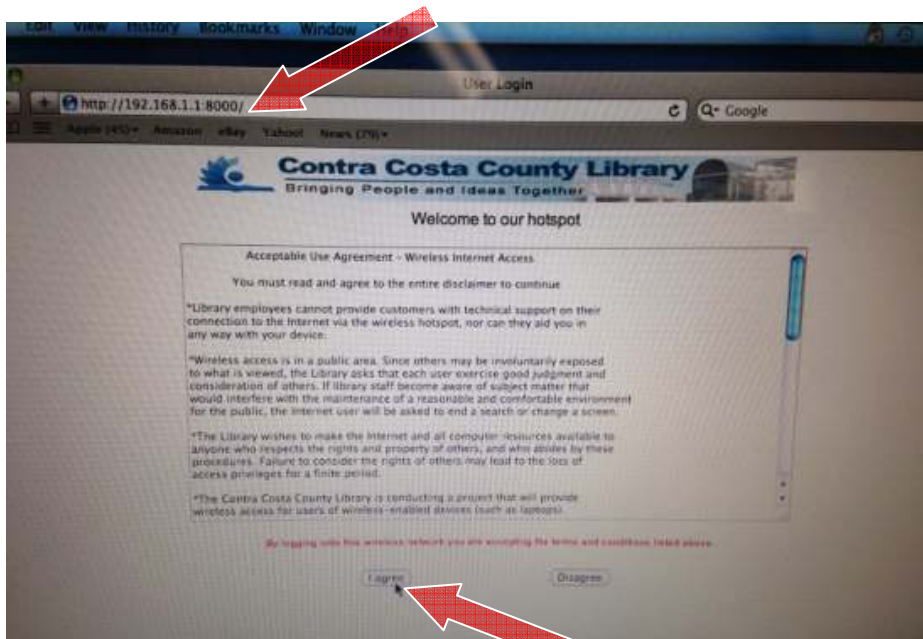
If for some reason the disclaimer page does not come up, try the following.

1-Be sure you are on the CCCLIBRARY wifi network.

2- Open the Safari browser/any browsers and type in: <http://192.168.1.1:8002/> hit enter.

(If you are on the CCCLIBRARY wifi, then you will see the disclaimer page as Picture1 below)

3- Click on “I agree”, and then you are online.



Picture1: Disclaimer Page